



# Connected solution for bakery electrical installation

## Acti 9 Smartlink ELEC System

Acti 9 Smartlink EL B



### Customer needs

When constructing a bakery, the owner wants to have a solution that can bring him:

- peace of mind, continuous monitoring of the electrical installation and business continuity
- optimized energy management to make business more efficient,
- easy interaction and easy management of the installation.

The electrician working on this project wants to have a solution:

- valuable for customer,
- easy to design and install,
- differentiating in the market.

### Proposed solution

#### Acti 9 Smartlink ELEC system

Acti 9 Smartlink EL B, core product to enable communication. iOF/SD24, iATL, iACT, RCA and energy meter, T° sensor to allow connection with loads.

Cloud (ADSL box) to proceed data and allow mobile connection.

Smartlink ELEC application (Smartphone) to allow end-user to interact with the electrical installation.

Config ELEC application (Smartphone, Wifer) to allow electrician to configure the installation.

### Users / customer benefits

#### Bakery

- **enhanced safety and reliability:** protect my people and property, ensure business continuity,
- **better business efficiency through energy management:** monitor electrical consumption,
- **24/7 live connection to the electrical installation:** easy and smart interactions with my installation.

#### Electrician

- **deliver the latest in connectivity:** enrich portfolio with connected offers and differentiate,
- **improve business efficiency:** easy to commission with Config ELEC and simple to install,
- **connect with customers:** new relationship with customer based on connectivity.



Bakery

## Preferred application

- bakery,
- superettes,
- small shops,
- ....

ADSL box or wifi adaptor +  
mobile interface =  
easy management of the installation.

## Specifications

### Bakery

No BMS investment.

A mobile interface must be provided for daily interaction.

A core product must be provided to make communication between the electrical installation and the mobile customer interface:

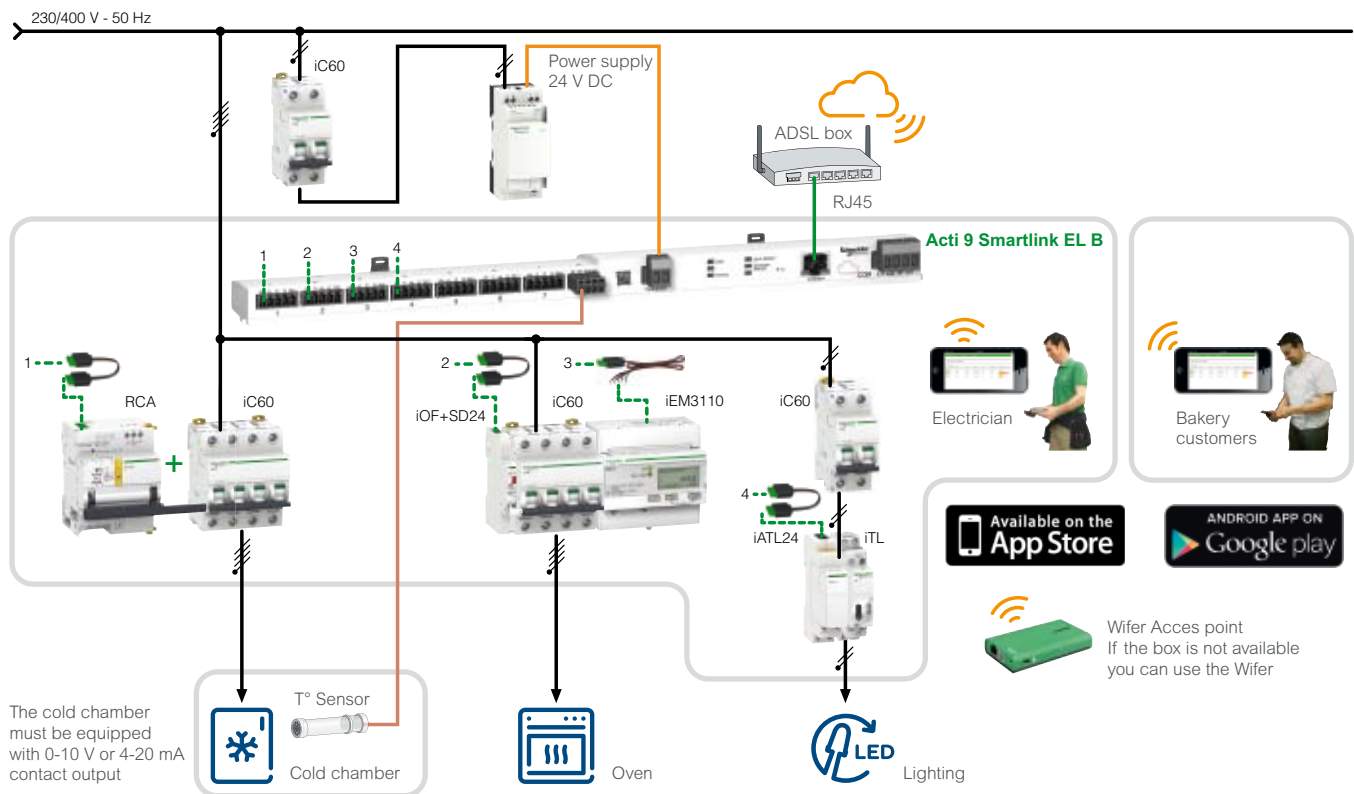
- the Open/Closed/Tripped status of the circuit breaker,
- reclose a circuit breaker in distance,
- the control ON/OFF of the load in distance,

- the control ON/OFF of the load with a repetitive schedule,
- the energy consumption of the load,
- the temperature, humidity value.

### Electrician

No PC needed to install and commission the system.

## Solution diagram



## Products used

Product	Description	Unity	Cat. no.
Acti 9 Smartlink EL B	Communication interface	1	A9XELC08
RCA 4P	Remote control with Ti 24 interface	1	A9C70124
iC60N	3P+N C40 A circuit breaker	2	-
iC60N	1P+N C4 A circuit breaker	1	-
iC60N	1P+N C25 A circuit breaker	1	-
iEM3110	Energy meter	1	A9IEM3110
iTL 2P	Impulse relay 16 A	1	A9C30812
iATL24	Impulse relay auxiliary with Ti 24 connector	1	A9C15424
iOF+SD24	Double open/close and fault indicating contact with Ti 24 connector	1	A9A26897
Wifer	Wifi adaptor	1	TCSEGWB13FA0
Power supply	24 V DC	1	ABL8-MEM24006

35, rue Joseph Monier - CS 30323  
F-92506 Rueil-Malmaison - FRANCE

Document Number CA9SS045E © 2016 Schneider Electric. All rights reserved.

Life Is On

**Schneider**  
Electric